

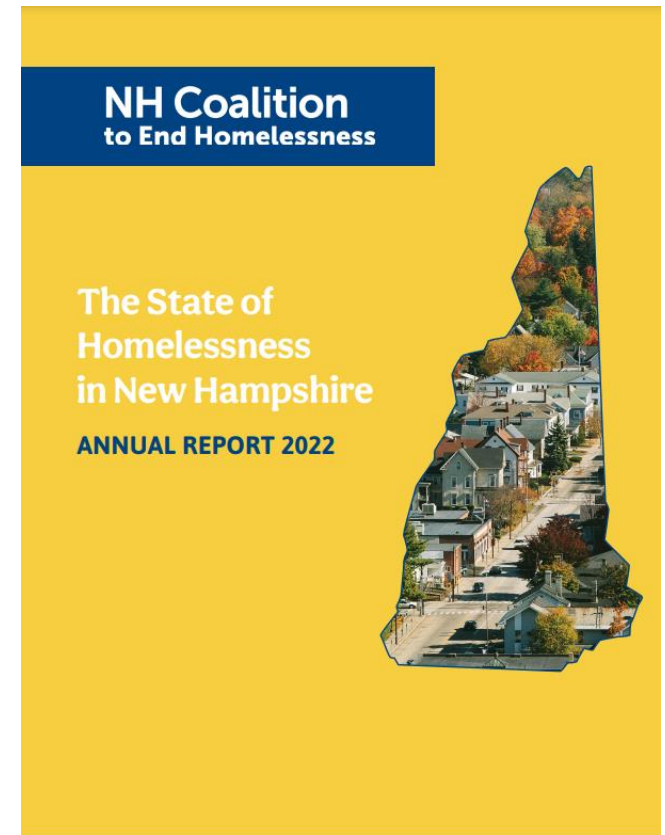
The State of Homelessness in New Hampshire

ANNUAL REPORT 2022

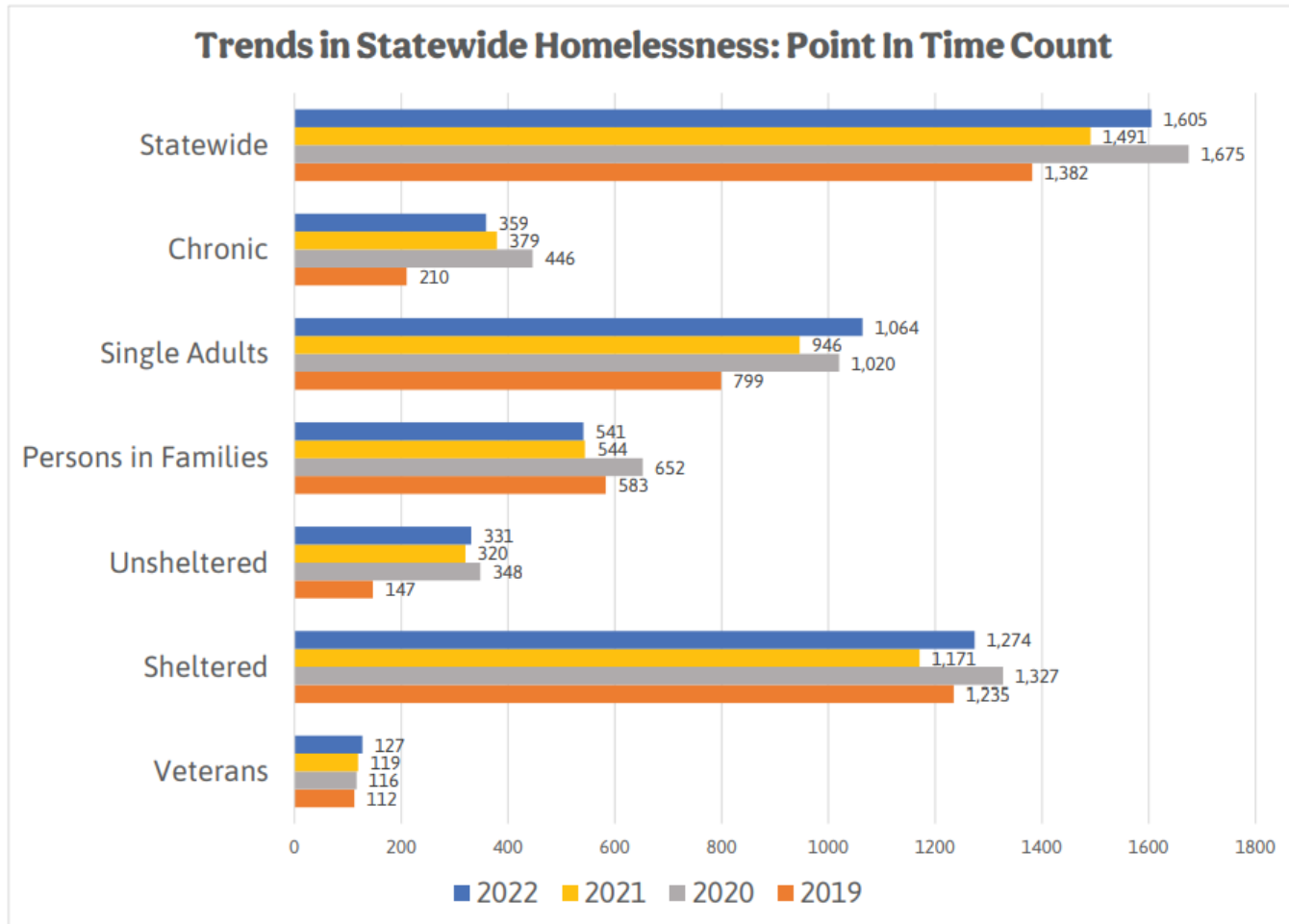
New Hampshire Coalition to End Homelessness

NHCEH 2022 Annual Report

- **Analysis of two data sources:**
 - **Point in Time (PIT) Count**
 - One 24-hour period in January
 - **Housing Management Information System (HMIS)**
 - Captures data across the entire calendar year

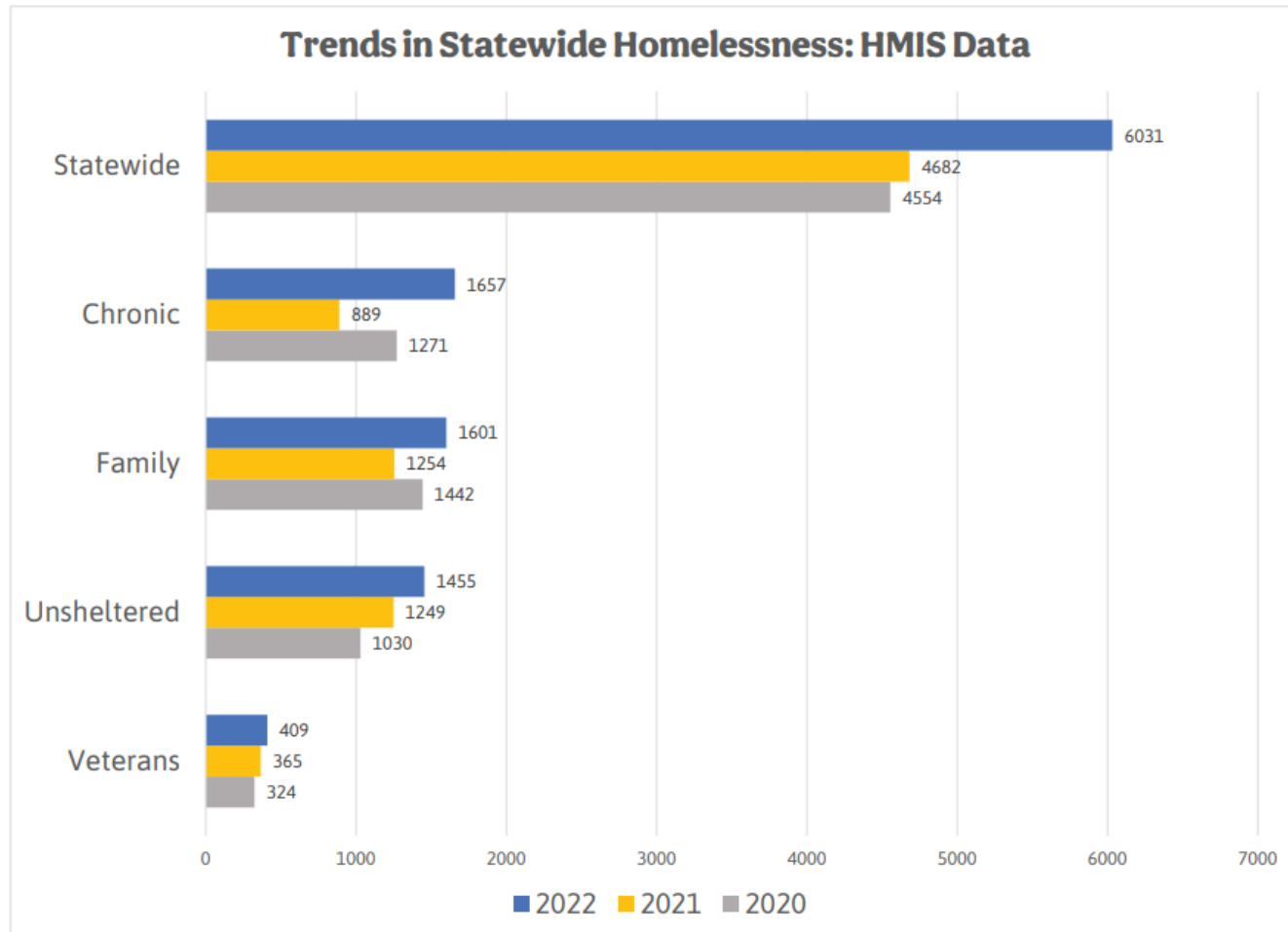


2019–2022 PIT Count Data:



Source: Institute for Community Alliances

2020–2022 HMIS Data



Source: Institute for Community Alliances

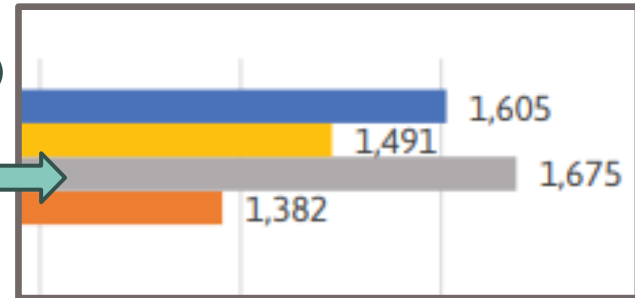
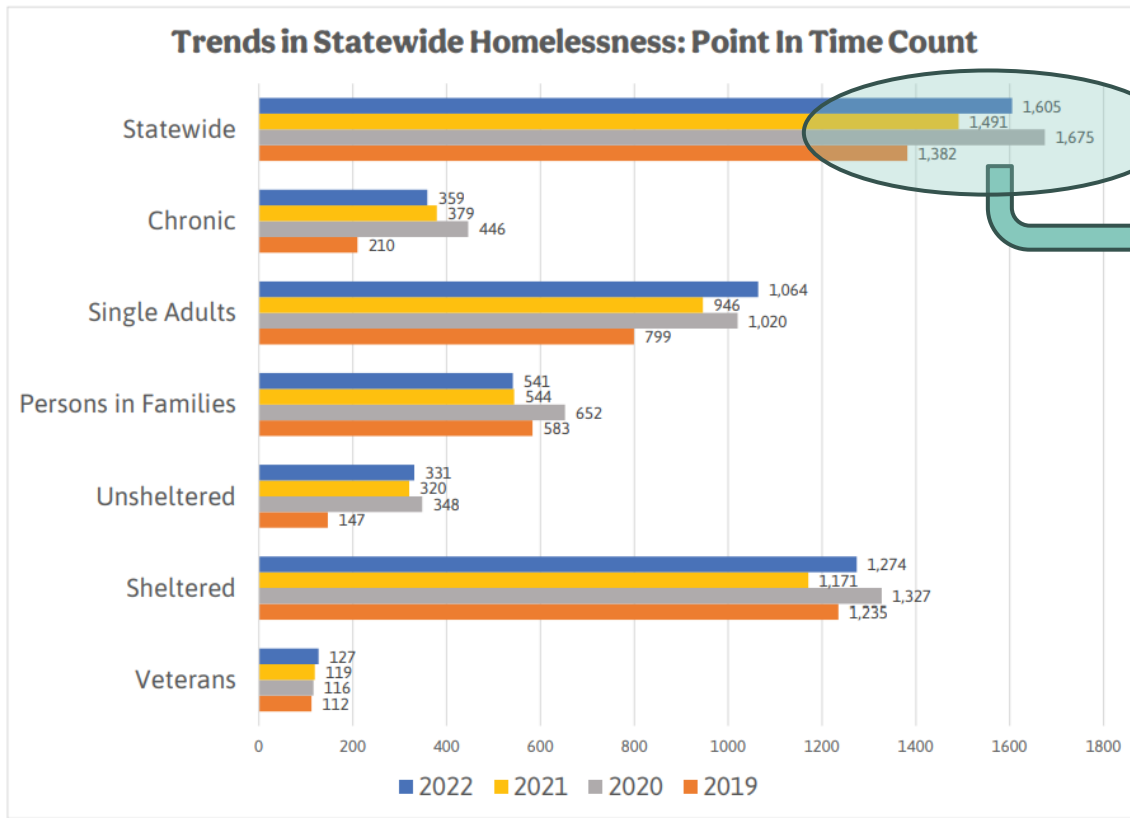
Key Takeaways

Key Takeaway #1



PIT data show increases in homelessness in 2022 following the loss of federal pandemic related funding support

PIT Data: Pre- and Post-Pandemic



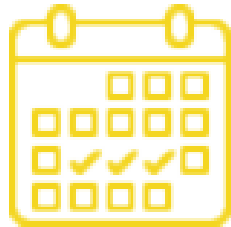
2020 = **1675**

2021 = **1491**

2022 = **1605**

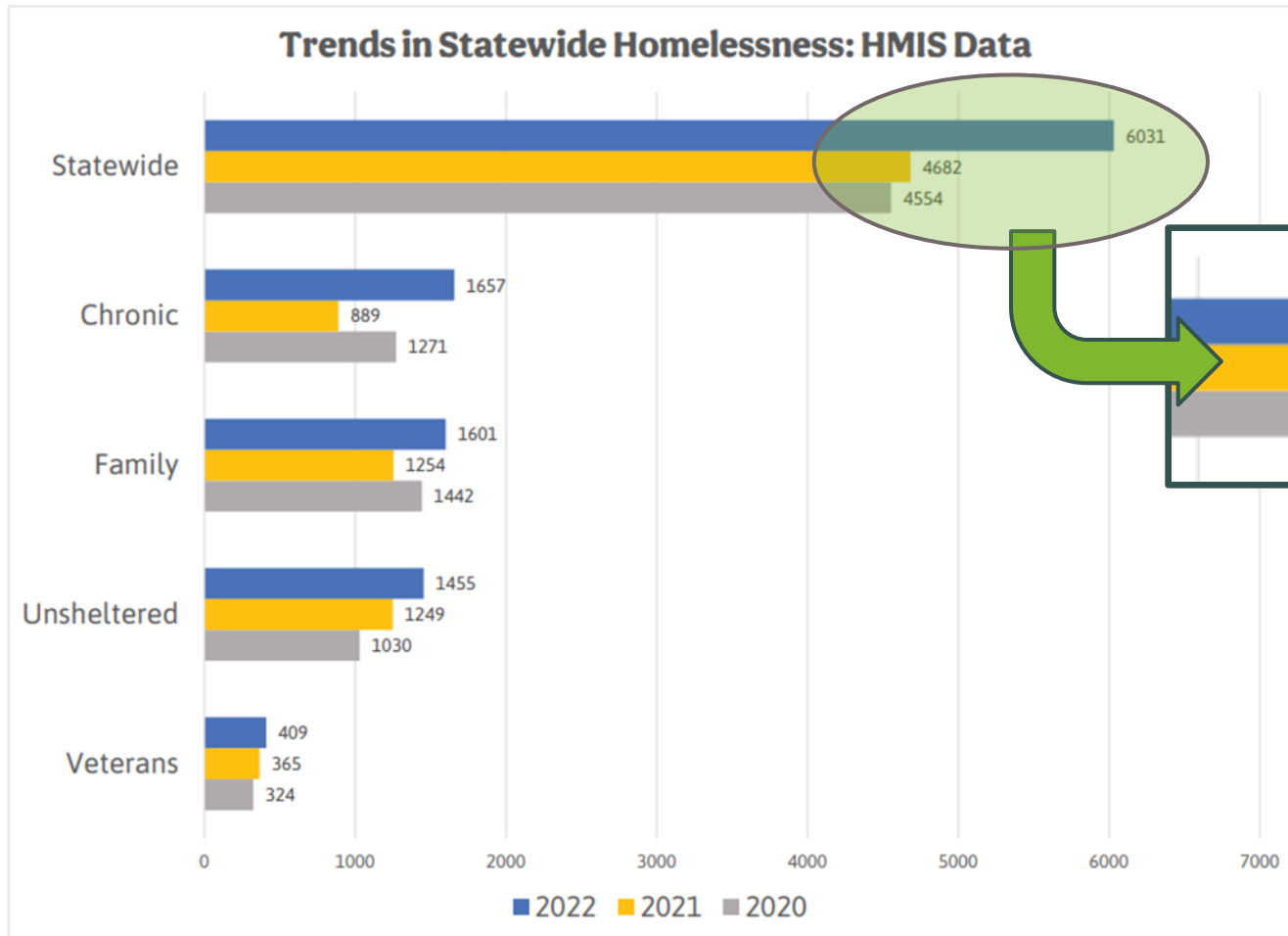
Source: Institute for Community Alliances

Key Takeaway #2



***Yearlong data from
HMIS document a
32% increase in the
unduplicated
counts of
individuals
experiencing
homelessness***

HMIS Data: Overall Homelessness

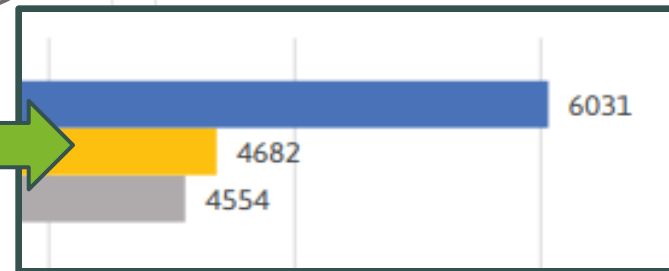
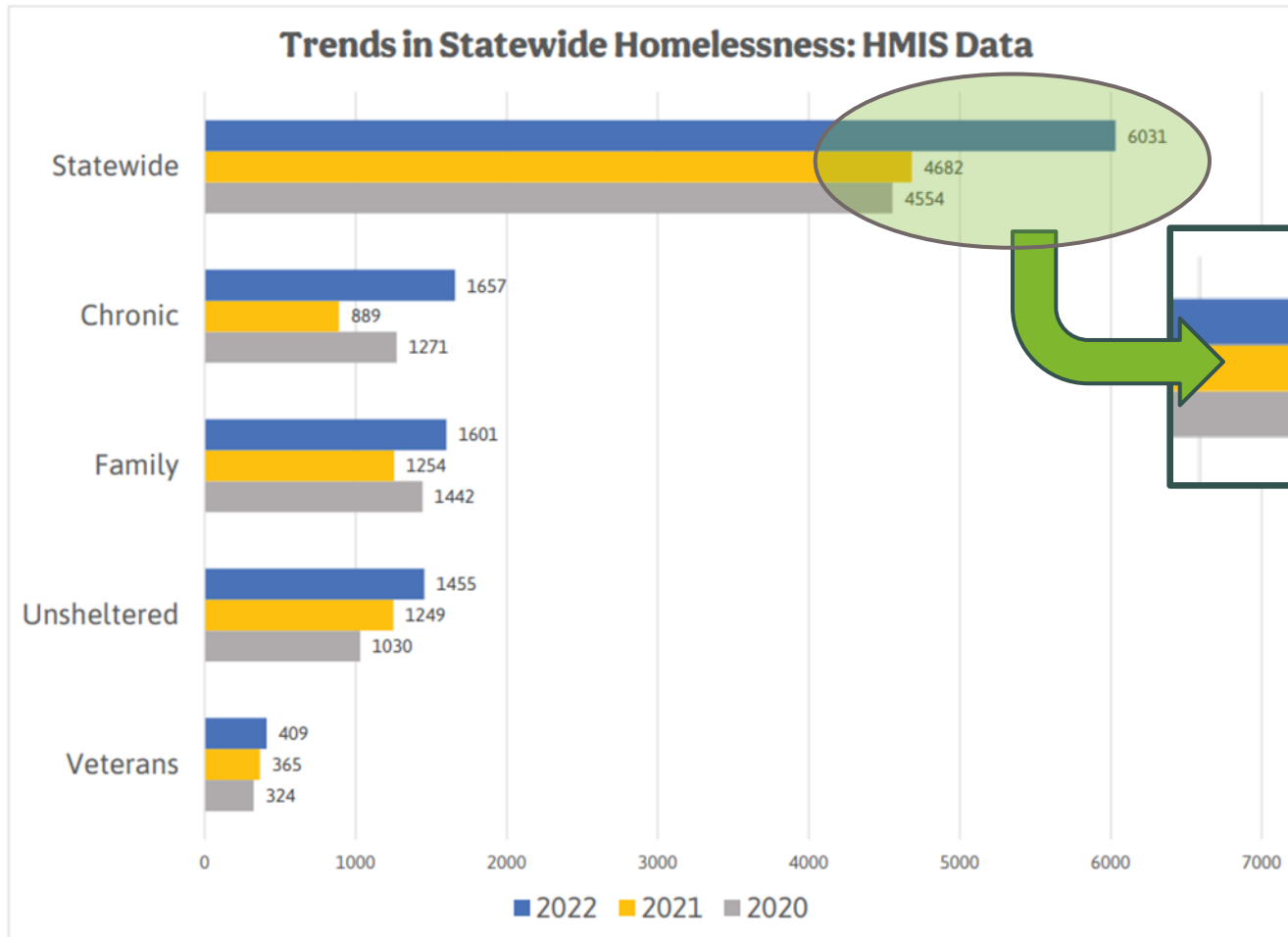


2020:
4554 people

2022:
6031 people

32%
Increase

HMIS Data: Overall Homelessness



2020 rate:
330.6 per 100k

2022 rate:
432.3 per 100k

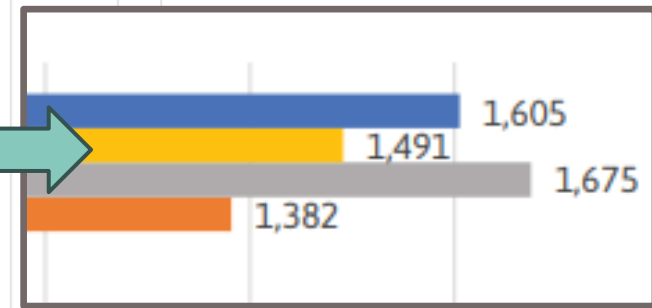
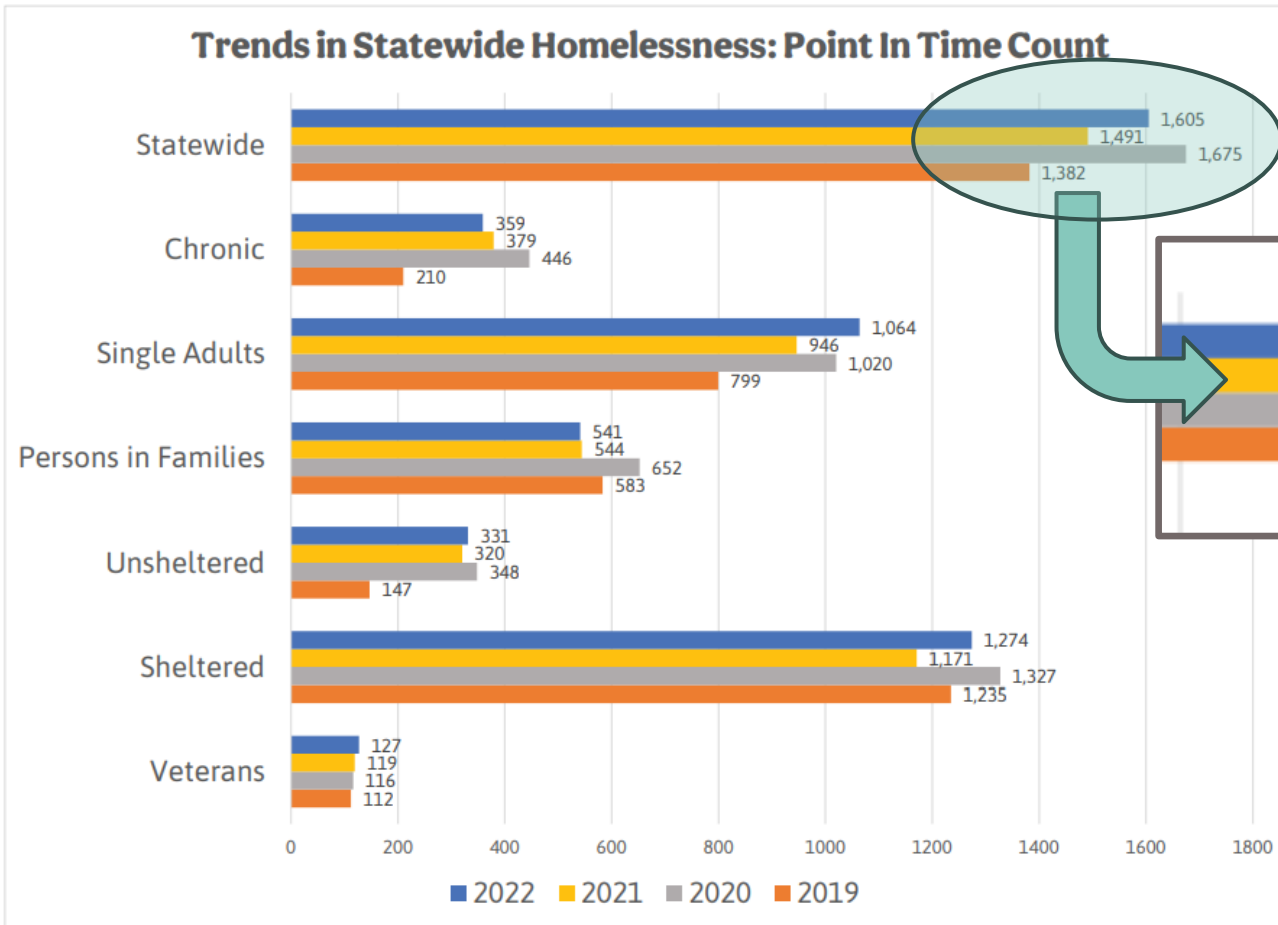
Rate increase:
30.8%

Key Takeaway #3



Unsheltered homelessness is increasing and requires enhanced support and attention

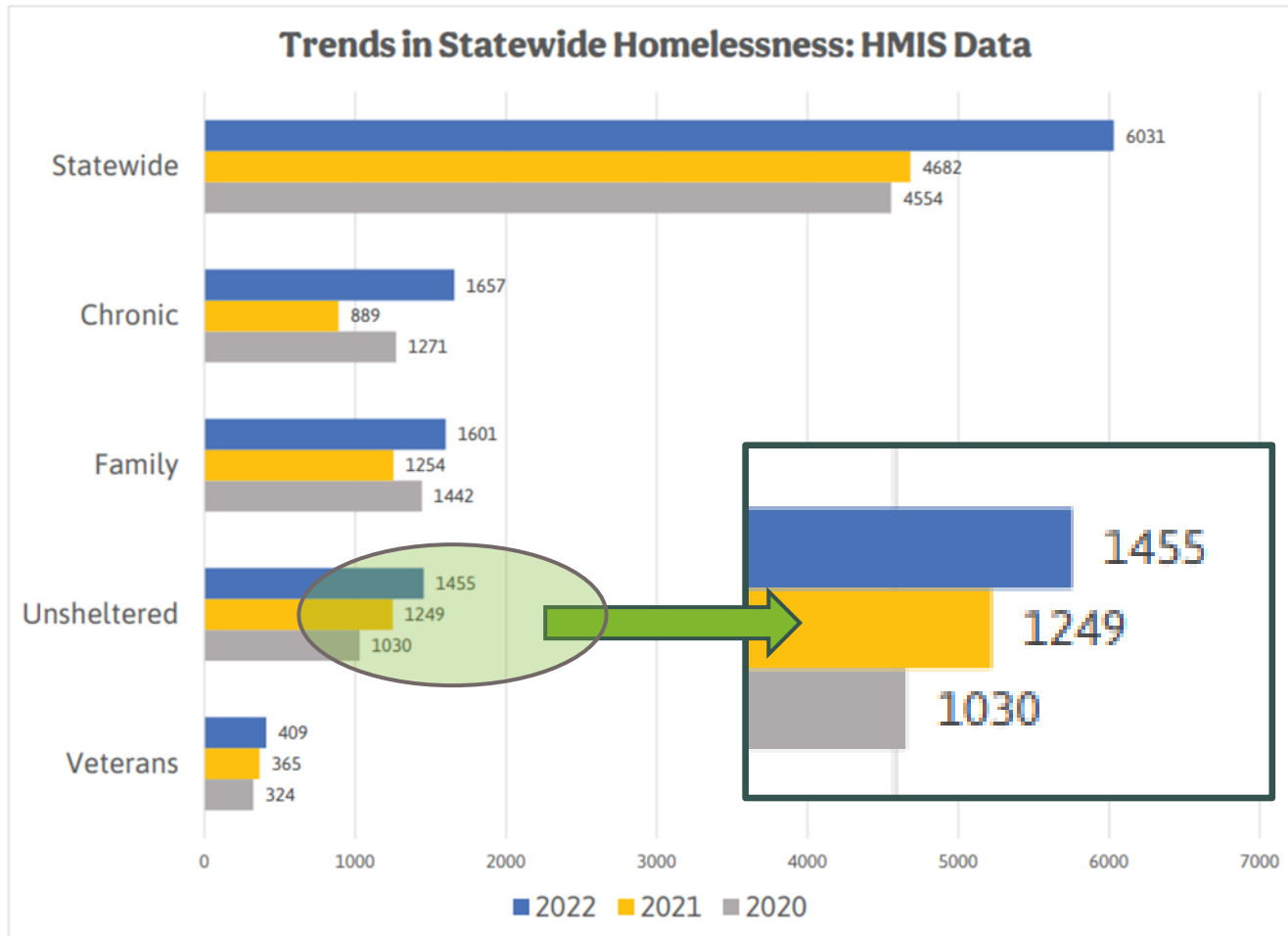
PIT Data: Unsheltered Homelessness



2019 to 2022:
125%
Increase in
unsheltered
homelessness

Source: Institute for Community Alliances

HMIS Data: Unsheltered Homelessness

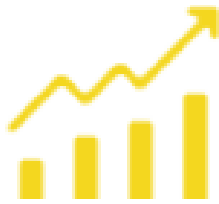


2020:
1030 people

2022:
1455 people

**41%
increase**

Key Takeaway #4



Chronic homelessness is increasing and is an area of **critical** concern

2022: Chronic Homelessness

PIT DATA show:

1 in 5 people

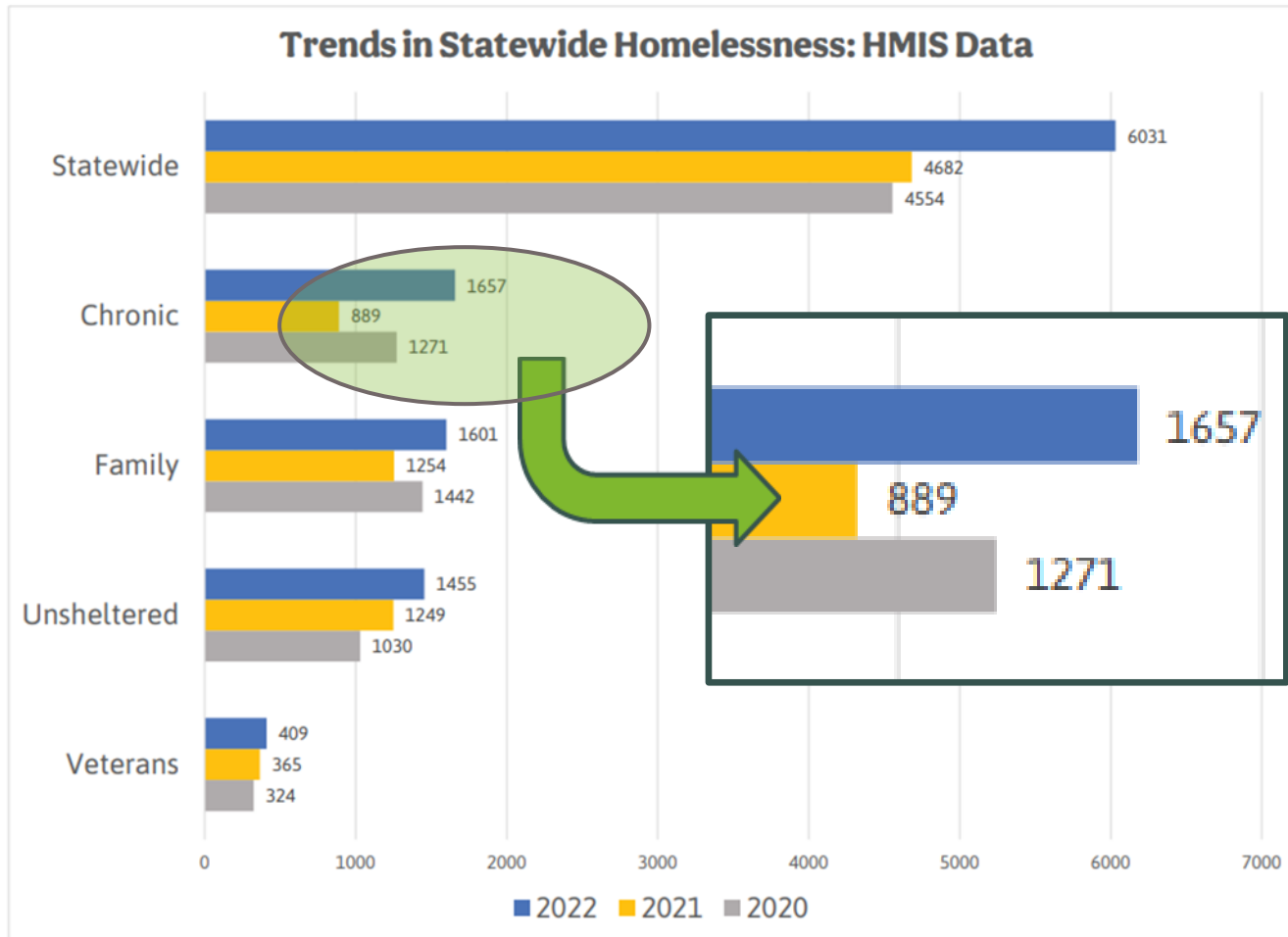
**was experiencing
chronic homelessness**

HMIS DATA show:

1 in 4 people

**was experiencing
chronic homelessness**

HMIS Data: Chronic Homelessness



2021:
889

2022:
1 657 people

86%
increase

Key Takeaway #5



The lack of affordable housing is a leading contributor to the rise in homelessness in New Hampshire

“Affordable” Housing in NH

Median 2 BR Rent:

\$1584

Median Wage:

\$23.04/hr

Wage needed to afford Median 2 BR:

\$31.00/hr

Number of hr/week needed at min wage (\$7.25/hr):

168

Key Takeaway #6



Supportive policies and additional resources are necessary to address housing needs and reduce homeless experience

- We have evidence-based solutions that work!
- We can look to pandemic-related interventions to determine which were effective
- We need to support people while housing units are being developed
- Public education to reduce stigma and combat NIMBY-ism is a must
- **Advocacy, advocacy, advocacy!**

THANK YOU

Jennifer Chisholm, LICSW, MLADC

Executive Director

NH Coalition to End Homelessness

jchisholm@nhceh.org

www.nhceh.org

Interested in Donating?

Go to:

<https://www.nhceh.org>

*and click the blue DONATE button
at the top left of the home screen!*



nhceh



nhceh